

Rota Slot

Specification Sheet
WFS151180

22/07/24

safesite[®]
F A C I L I T I E S

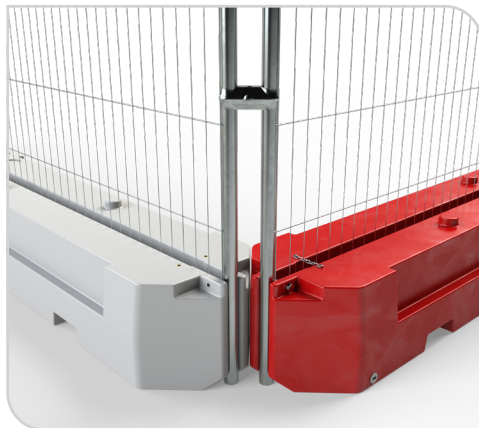


Rota Slot

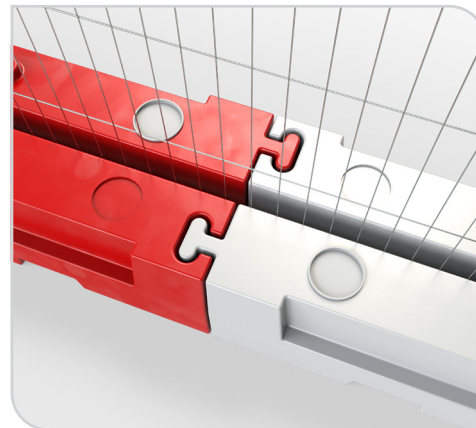
Rota Slot bases offer water-filled ballast for standard 3.5m temporary fencing, ensuring security and stability in applications like construction, events, and crowd control.

Each Rota Slot base is 13kg when empty, enabling quick and easy assembly. When two Rota Slot bases are filled and interlocked, they reach a combined weight of 320kg.

For added security and theft prevention, utilise either the bolt fastener or a chain to securely affix the fence panel in position.



90° cornering



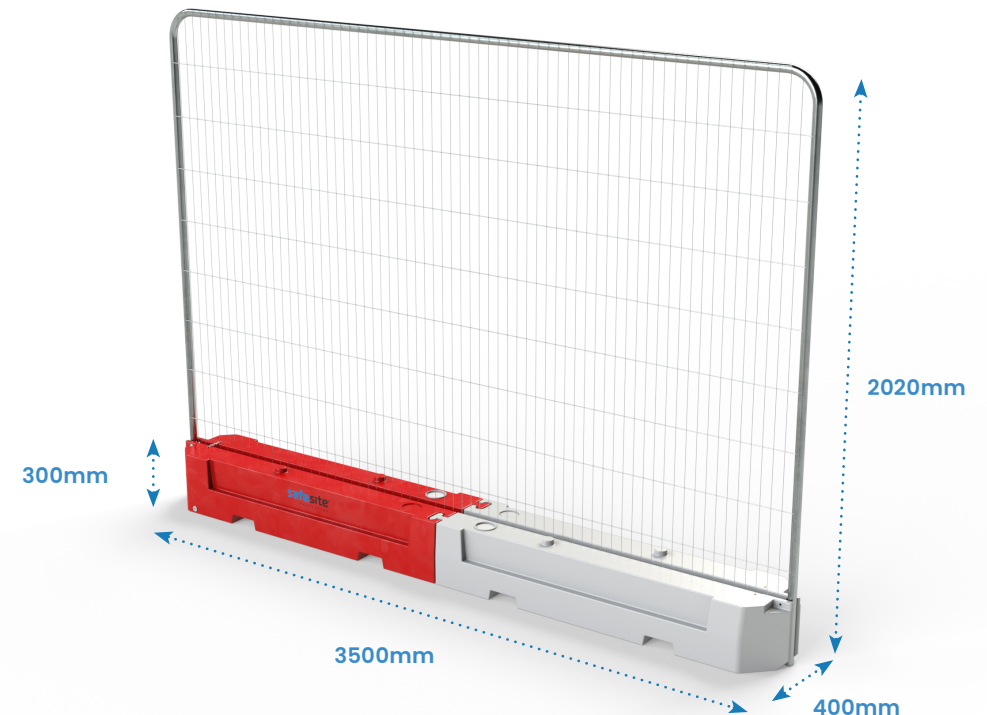
Slots together

2x Rota Slot Specification

| Size (mm) | Weight (kg) | Weight Full (kg) |
|---------------------|-------------|------------------|
| H300 x W3500 x D400 | 26kg | 320kg |

Key Features

- ▶ Bolt/chain fastener for theft prevention
- ▶ 320kg water ballast for stability and visibility
- ▶ Optional reflective strips
- ▶ Mira wind tested to 67.3mph
- ▶ Custom corporate colours
- ▶ 18 blocks/9 units per 2m pallet





Technical Details

